



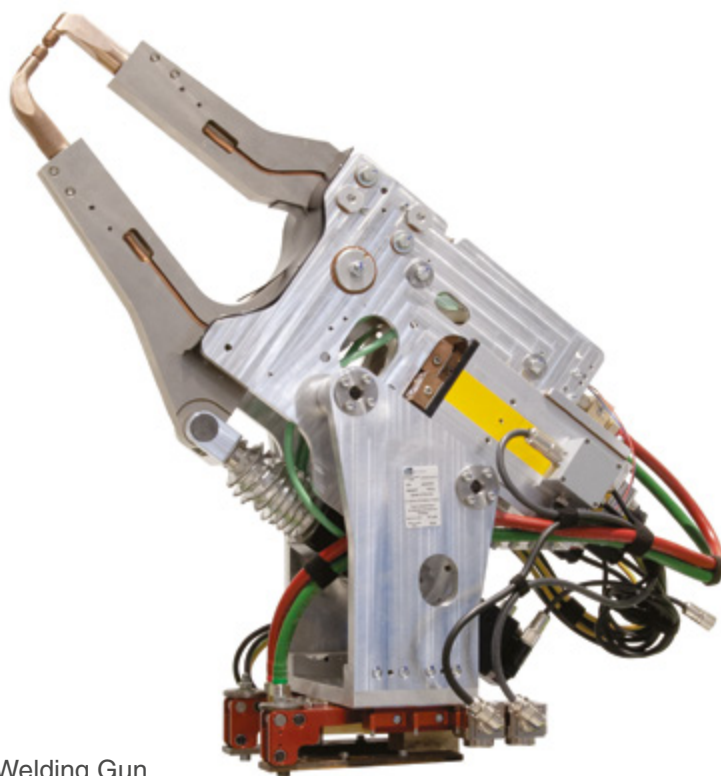
V6-C
Robot Welding Gun

FOR ALUMINUM WELDING

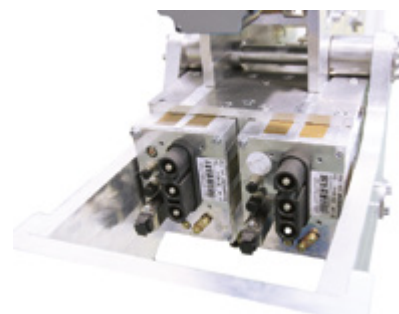
Tip Force up to: 9 kN
Current Max: 50 kA

CHARACTERISTICS:

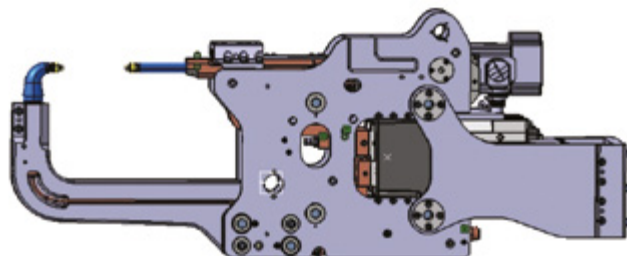
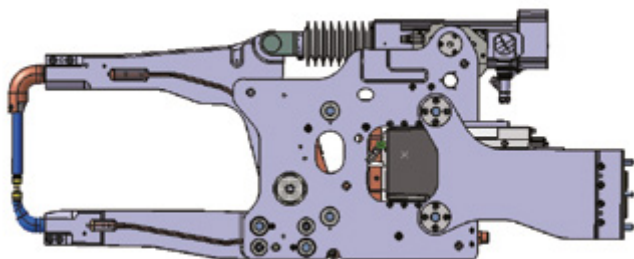
- **Standardization:**
Standardized Body, Bracket, Transformer and Actuator as main parts of Welding Gun.
- **Modularity:**
Library of more than 20 different standard bracket;
Copper round arms, Aluminum arms, or mixed arms;
Actuator for common Robots.
- **Reliability:**
Simple maintenance;
Very easy and short change time of components with a reduced number of tools;
Strategy "no spare guns"



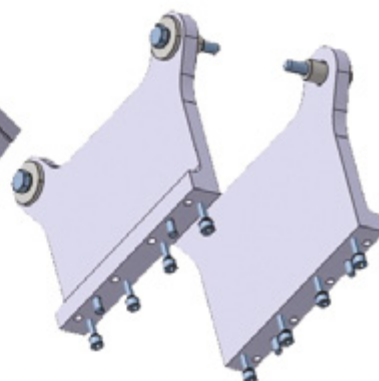
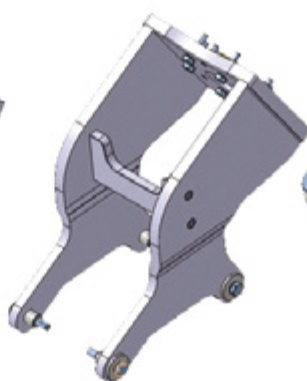
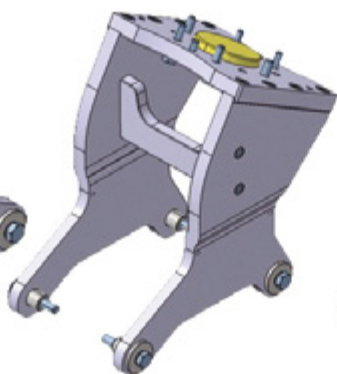
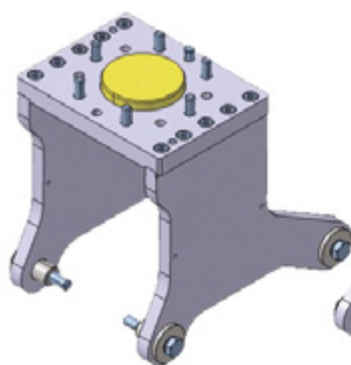
V6-X
Robot Welding Gun



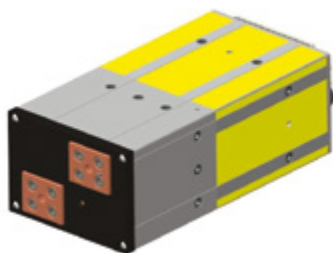
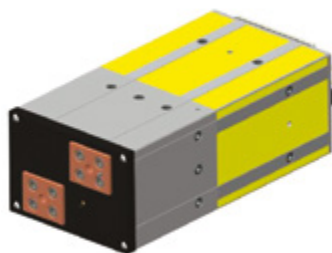
Double MF 180 kVA at 50%



Only one Gun Body for both C and X Guns



Brackets for various applications



MF Transformers

MF TRANSFORMER FOR X GUN (example):

Standard:	ISO 5826-22829
Insulation Class:	F
Weight:	19 kg
Rated Supply Voltage U_{1N} :	530 V
Frequency F:	1000 Hz
Rated Output No-Load U_{2d} :	17 V

Turns Ratio:	38:1
Input Power 20% Duty Fact. $S_{20\%}$:	154.8 kVA
Perman. Power S_p :	109.4 kVA
Secondary Perman. Current I_{2p} :	- -
Cooling Water:	8 l/min.
Differential Pressure:	0.06 Mpa